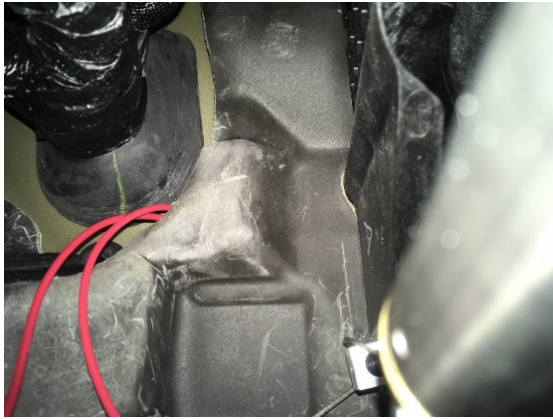


## Cherokee Tow Wiring Kit Under the Dash Switch Installation

I installed a switch in the driver's compartment so I could activate the power steering without having to open the hood and insert the 10 Amp fuse, and then reverse the process to deactivate the system.

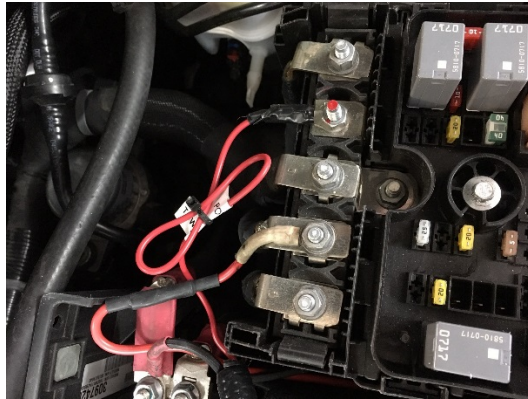
- There is a rubber grommet in the firewall on the driver's side just behind a plastic guard next to where the dash wire loom enters the vehicle. I drilled a hole in the grommet and ran two 16 Ga wires through it and the hole in the firewall.



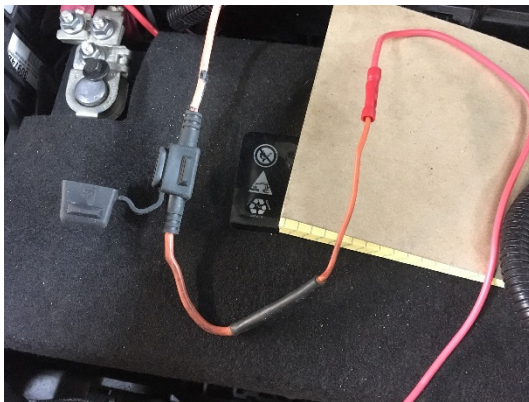
- I drilled a 1/2" hole in the bottom of the dash panel and mounted an ON/OFF safety cover switch.
  - One wire was connected to the power pin.
  - One wire, marked with black tape, was connected to the load pin.



- Under the hood the wire from the power side of the switch was connected to a lug on the 12V power distribution module after removing the factory installed wire.



- The wire from the load side of the switch (marked with black tape) was connected to the fused wire to the power steering module. After inserting the fuse the wire was tucked between the battery and the distribution module.



To activate the electronic power steering, I:

- Make sure all of the lights on the dash are out.
- Flip the switch in the center console to the ON position.
- Flip the installed switch under the dash to the ON position.

After I make sure the power steering is activated by turning the steering wheel back and forth, I exit the vehicle.

To deactivate the power steering when I'm ready to drive the vehicle, I:

- Flip the installed switch under the dash to the OFF position.
- Flip the switch in the center console to the OFF position.