



# **HWH<sup>®</sup> AP49818** **Class C Leveling System**

Ford E350/E450 Cutaway Chassis (Class C)  
Chevy G3500 Cutaway Chassis (1997 and newer) (Class C)

## **Computer Automatic Control with Kick-Down Jacks**



### **AP0227 Jack Kit**

Two Kick-Down

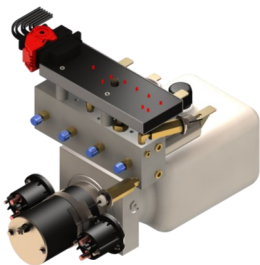
(Power-Extend/Spring-Retract) Jacks with a lifting capacity of 6,000 lbs. per jack Low Profile



### **AP0228 Jack Kit**

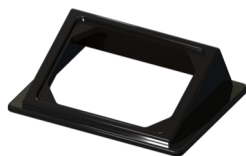
Two Kick-Down

(Power-Extend/Spring-Retract) Jacks with a lifting capacity of 6,000 lbs. per jack Standard Profile

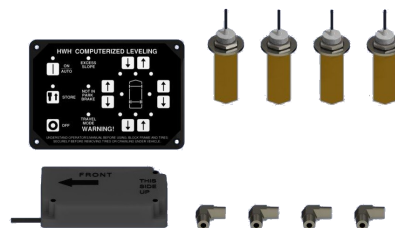


### **AP47564 Power Unit Kit**

725 Series, 12 Volt DC Motor and Pump 125 amp - 3,000 psi relief with prewired control module and jack valving



### **AP35390 Bezel Plate**



### **AP47560 Control Kit**

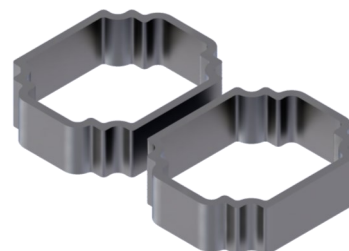
725 Series, Single-Step BI-AXIS<sup>®</sup> Touch Panel-Controlled Hydraulic Leveling System with Leveleze<sup>®</sup> Light Package



### **AP0252 Hose Kit**



### **AP0897 (Two) Universal Bracket Kits** One for front and one for rear jacks.



### **AP9434 Spacer Bracket** 1.5" (Rear)



[www.HWH.com](http://www.HWH.com)



2096 Moscow Road, Moscow, IA 52760 Ph: 800-321-3494 | Fax: 563-724-3408



Installation Info

# **STRONG, RELIABLE, HYDRAULIC POWER**

ML51120\_AP49818.PUB 26SEP14