

BOM TOTAL

| QTY | DESCRIPTION | EXTENDED | U/M |
|-----|---|----------|-----|
| 1 | ANTENNA, SIRIUSXM | 1 | EA |
| 1 | ASSEMBLY, AC VENT (TLM0091) | 1 | EA |
| 2 | BACKER, EGS, 30 X 26 (TLM0100) | 2 | EA |
| 2 | BACKER, EGS, 36 X 36 (TLM0101) | 2 | EA |
| 2 | COLLAR, RADIUS ROOF - SHOWER DOME (TLM0098) | 2 | EA |
| 6 | COLLAR, RADIUS ROOF (TLM0094) | 6 | EA |
| 29 | EGS 3 x 64 9/16 x 28GA | 14.32 | EA |
| 10 | FOAM, RADIUS ROOF (TLM0082) | 10 | EA |
| 1 | FRAMING (TRF1008) | 1 | EA |
| 5 | LAUAN 48 x 99 x 2.7mm | 140.04 | SF |
| 2 | LIGHT, LED, 3", RECESSED (0312135) | 2 | EA |
| 10 | LIGHT, LED, 4", RECESSED (0312136) | 10 | EA |
| 5 | PANEL, CEILING (HARD) 48 x 99 | 142.43 | SF |
| 1 | PLATE, ANTENNA MOUNT (TFM5369) | 1 | EA |
| 2 | ROOF, RADIUS SHIM (TLM0067) | 2 | EA |
| 1 | SOLAR PLATE (0317493) | 1 | EA |
| 1 | TPO 9' x 500' | 153.94 | SF |
| 4 | TRIM, BATTEN RETAINER | 33.00 | LF |
| 4 | TRIM, CEILING BATTEN | 32.00 | LF |
| 8 | TUBE, ALUMINUM 1 x 1 1/2 x .04 | 55.50 | LF |
| 6 | TUBE, ALUMINUM 1 x 1 x .04 | 18.46 | LF |
| 10 | TUBE, ALUMINUM 1 x 1 x .04 RADIUS | 80.22 | LF |
| 4 | TUBE, ALUMINUM 1 x 2 x .045 | 5.17 | LF |
| 1 | WIFI / TV ANTENNA | 1 | EA |

| REV | DESCRIPTION | DATE | BY | ECN |
|-----|--|------------|-----|-------|
| - | INITIAL RELEASE REPLACES TRF0950 FOR M.Y. 2020 | 11/20/2018 | CR | 16150 |
| 1 | CORRECTED BOTTOM EGS PLACEMENT AS NEEDED (PG. 3) | 4/24/2019 | JDM | 16933 |

ALL DIMENSIONS ARE TO LEADING EDGE OF PART, EXCEPT THE LAST DIMENSION ON THE PART

EGS SHOWN AS:
PLYWOOD SHOWN AS:
VOID SHOWN AS:
ROUTE SHOWN AS:
STRUCTURAL TUBE:
TOLERANCE: ±1/16"



SPECIAL NOTES:

THOR MOTOR COACH

DRAWN BY CR SHEET 1 OF 7 DATE 5/7/2018

DESCRIPTION

ROOF, RADIUS, UNIT

MODEL

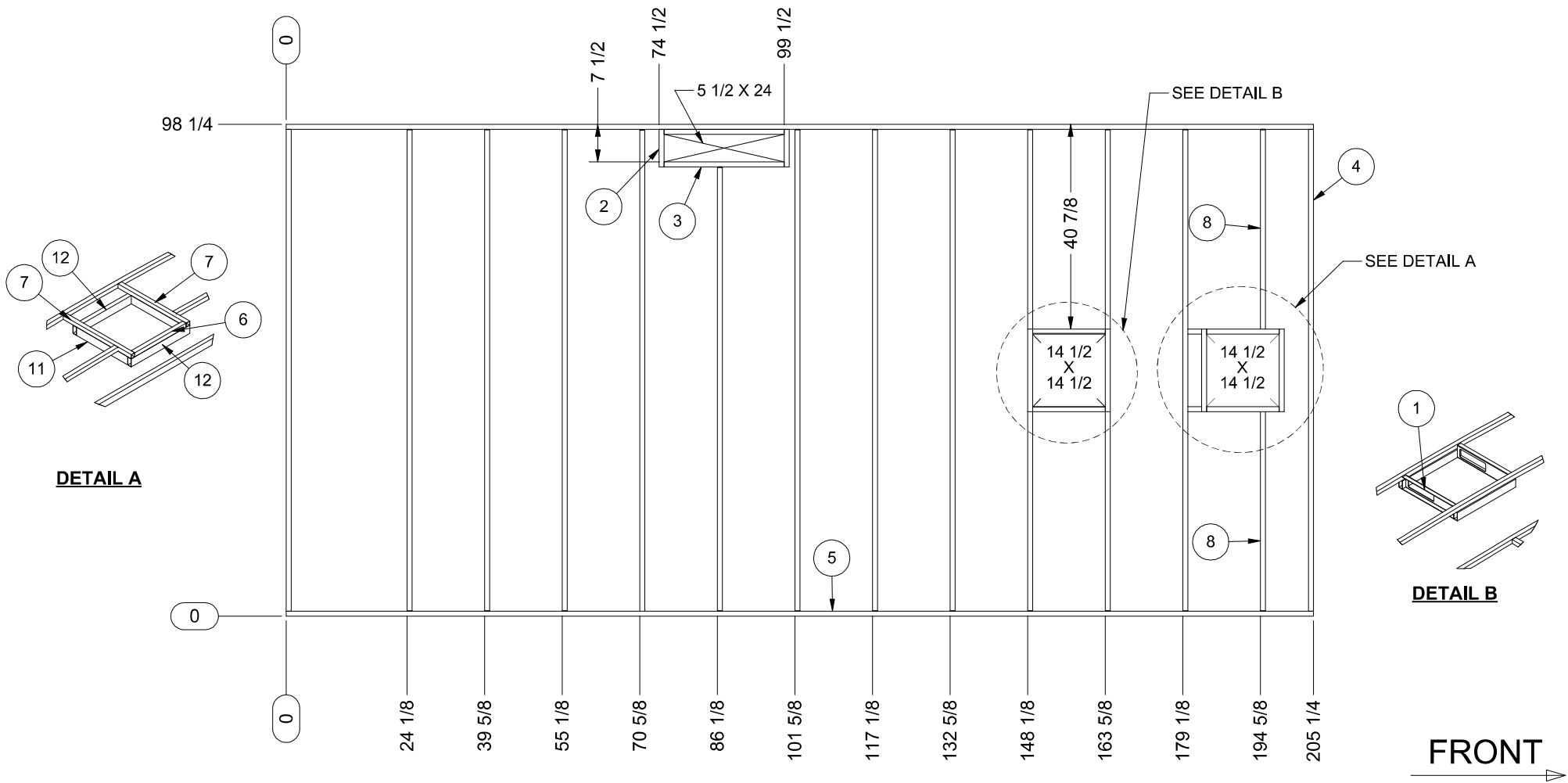
22E, 22HE, 22GO, SE22

© CONFIDENTIAL AND PROPRIETARY INFORMATION OF THOR MOTOR COACH. ANY REPRODUCTION IN PART OR AS A WHOLE WITHOUT OUR EXPRESS WRITTEN CONSENT IS PROHIBITED.

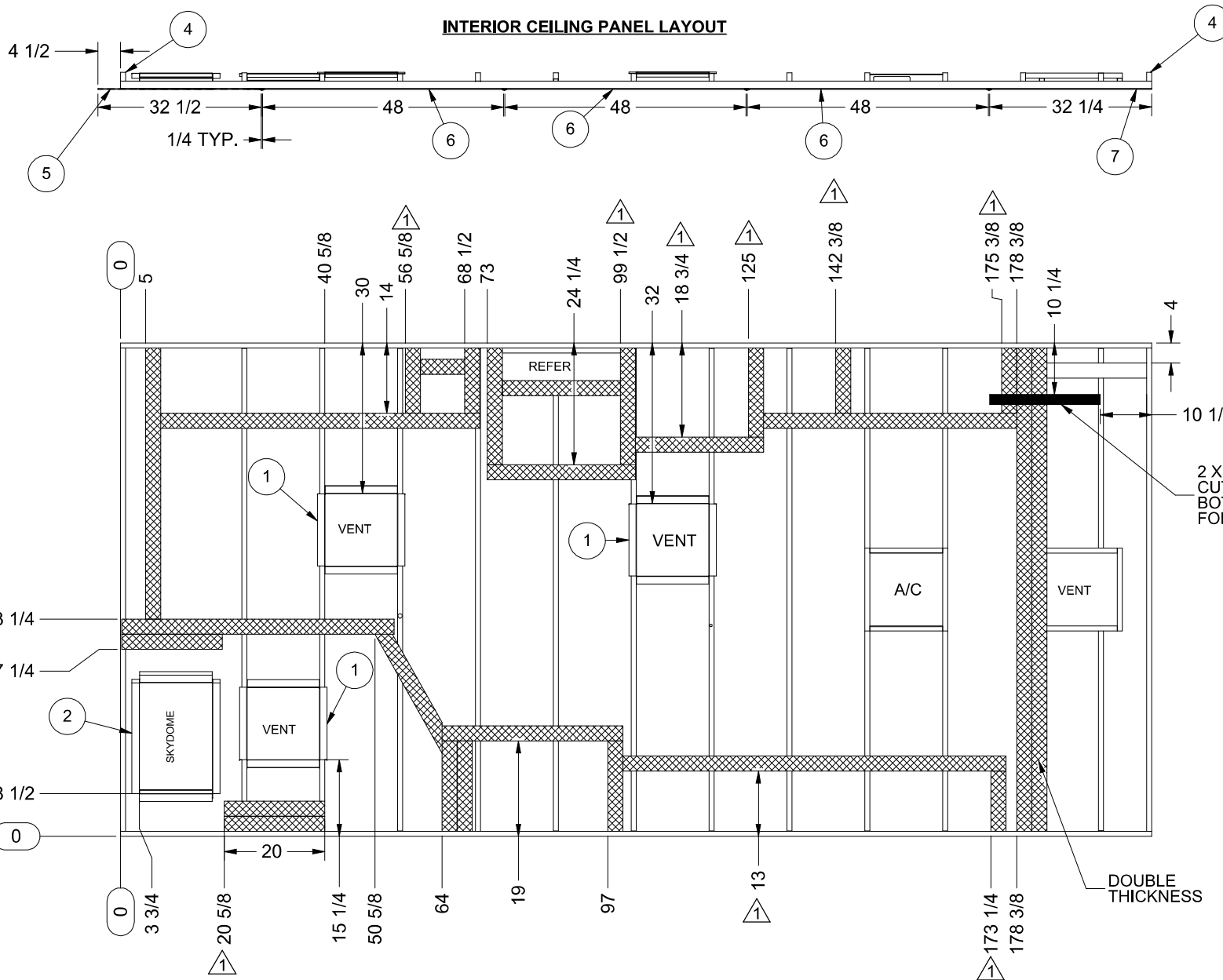
DRAWING NUMBER TRF1008 REVISION 1

| FRAMING | | | | |
|---------|-----|--------------------------------|--------|---------|
| NO | QTY | DESCRIPTION - W x L (GRAIN) | SIZE A | SIZE B |
| 1 | 1 | ASSEMBLY, AC VENT (TLM0091) | | |
| 2 | 2 | TUBE, ALUMINUM 1 x 1 1/2 x .04 | | 7 1/2 |
| 3 | 2 | TUBE, ALUMINUM 1 x 1 1/2 x .04 | | 24 |
| 4 | 2 | TUBE, ALUMINUM 1 x 1 1/2 x .04 | | 96 1/4 |
| 5 | 2 | TUBE, ALUMINUM 1 x 1 1/2 x .04 | | 205 1/4 |
| 6 | 1 | TUBE, ALUMINUM 1 x 1 x .04 | | 14 1/2 |

| FRAMING | | | | |
|---------|-----|---|--------|----------|
| NO | QTY | DESCRIPTION - W x L (GRAIN) | SIZE A | SIZE B |
| 7 | 2 | TUBE, ALUMINUM 1 x 1 x .04 | | 19 1/4 |
| 8 | 2 | TUBE, ALUMINUM 1 x 1 x .040 RADIUS 39.875 | | |
| 9 | 1 | TUBE, ALUMINUM 1 x 1 x .040 RADIUS 88.75 | | 88 11/16 |
| 10 | 10 | TUBE, ALUMINUM 1 x 1 x .040 RADIUS 96.25 | | |
| 11 | 2 | TUBE, ALUMINUM 1 x 2 x .045 | | 14 1/2 |
| 12 | 2 | TUBE, ALUMINUM 1 x 2 x .045 | | 16 1/2 |



| | | | | |
|---|----|-------|---|----------|
| ALL DIMENSIONS ARE TO LEADING EDGE OF PART, EXCEPT THE LAST DIMENSION ON THE PART | | | | |
| EGS SHOWN AS: | CR | SHEET | 2 | OF 7 |
| PLYWOOD SHOWN AS: | | | | |
| VOID SHOWN AS: | | | | |
| ROUTE SHOWN AS: | | | | |
| STRUCTURAL TUBE: | | | | |
| TOLERANCE: ±1/16" | | | | |
| SPECIAL NOTES: | | | | |
| DRAWN PANEL SIDE UP | | | | |
| THOR MOTOR COACH | | | | |
| DESCRIPTION | | | | |
| ROOF, RADIUS, UNIT | | | | |
| MODEL | | | | |
| 22E, 22HE, 22GO, SE22 | | | | |
| © CONFIDENTIAL AND PROPRIETARY INFORMATION OF THOR MOTOR COACH. ANY REPRODUCTION IN PART OR AS A WHOLE WITHOUT OUR EXPRESS WRITTEN CONSENT IS PROHIBITED. | | | | |
| DRAWING NUMBER | | | | REVISION |
| TRF1008 | | | | 1 |



INTERIOR EGS AND ASSEMBLY

| NO | QTY | DESCRIPTION - W x L (GRAIN) | SIZE A | SIZE B |
|----|-----|---|--------|--------|
| 1 | 6 | COLLAR, RADIUS ROOF (TLM0094) | | |
| 2 | 2 | COLLAR, RADIUS ROOF - SHOWER DOME (TLM0098) | | |
| 3 | 10 | FOAM, RADIUS ROOF (TLM0082) | | |
| 4 | 2 | ROOF, RADIUS SHIM (TLM0067) | | |
| 5 | 1 | PANEL, CEILING (HARD) 48 x 99 | 32 1/2 | 98 1/4 |
| 6 | 3 | PANEL, CEILING (HARD) 48 x 99 | 48 | 98 1/4 |
| 7 | 1 | PANEL, CEILING (HARD) 48 x 99 | 32 1/4 | 98 1/4 |
| 8 | 4 | TRIM, BATTEN RETAINER | | 99 |
| 9 | 4 | TRIM, CEILING BATTEN | | 96 |

ALL DIMENSIONS ARE TO LEADING EDGE OF PART, EXCEPT THE LAST DIMENSION ON THE PART

EGS SHOWN AS:
 PLYWOOD SHOWN AS:
 VOID SHOWN AS:
 ROUTE SHOWN AS:
 STRUCTURAL TUBE:
 TOLERANCE: $\pm 1/16"$



SPECIAL NOTES:
 DRAWN PANEL SIDE UP

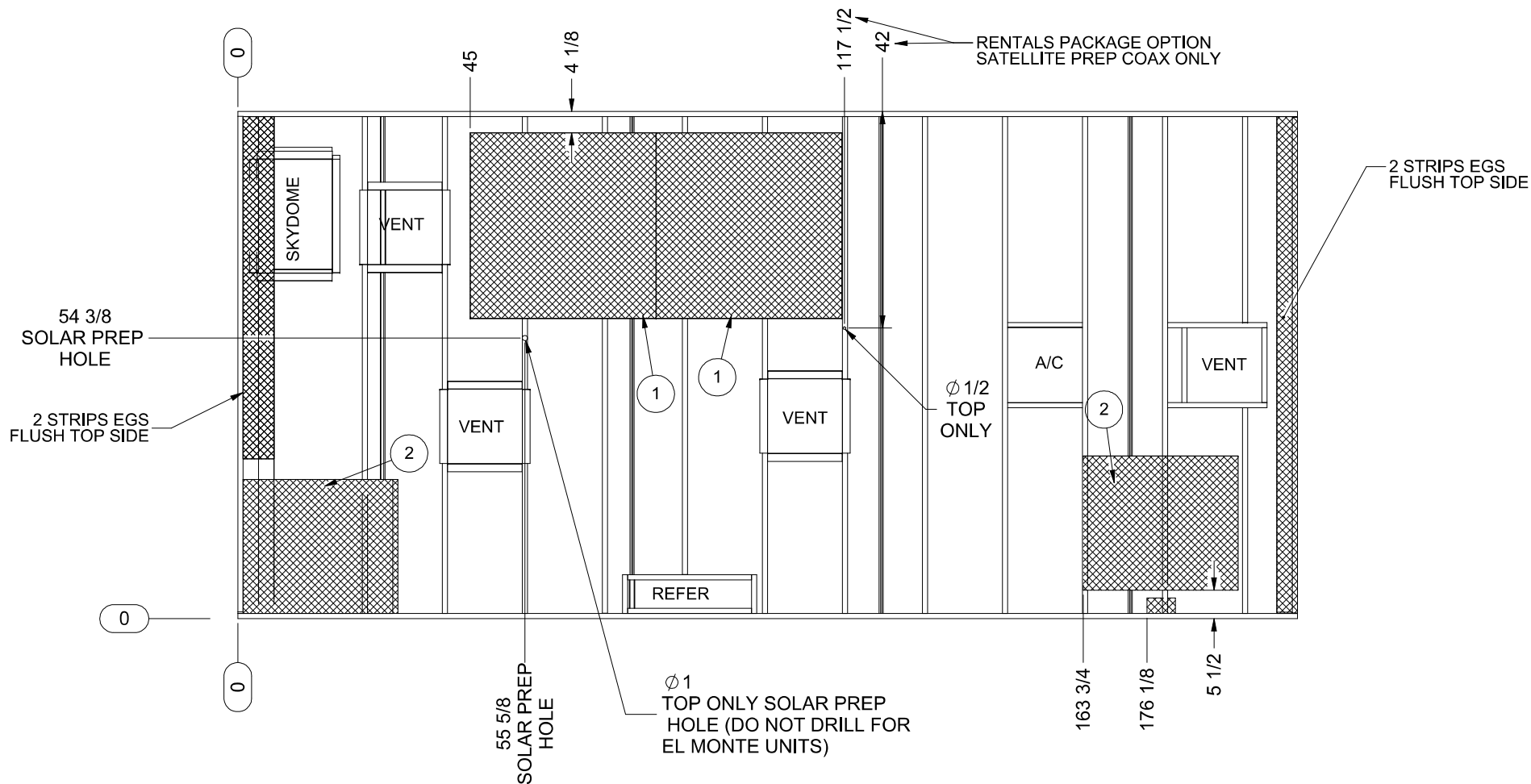
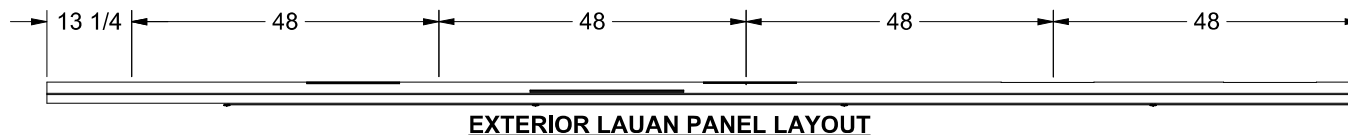
THOR MOTOR COACH

DRAWN BY CR SHEET 3 OF 7 DATE 5/7/2018

DESCRIPTION
 ROOF, RADIUS, UNIT

MODEL
 22E, 22HE, 22GO, SE22

DRAWING NUMBER TRF1008 REVISION 1



ALL DIMENSIONS ARE TO LEADING EDGE OF PART,
EXCEPT THE LAST DIMENSION ON THE PART

EGS SHOWN AS:
PLYWOOD SHOWN AS:
VOID SHOWN AS:
ROUTE SHOWN AS:
STRUCTURAL TUBE:
TOLERANCE: $\pm 1/16"$



SPECIAL NOTES:

VIEWED FROM TOP SIDE

THOR MOTOR COACH

DRAWN BY **CR** SHEET **4** OF **7** DATE **5/7/2018**

DESCRIPTION

ROOF, RADIUS, UNIT

MODEL

22E, 22HE, 22GO, SE22

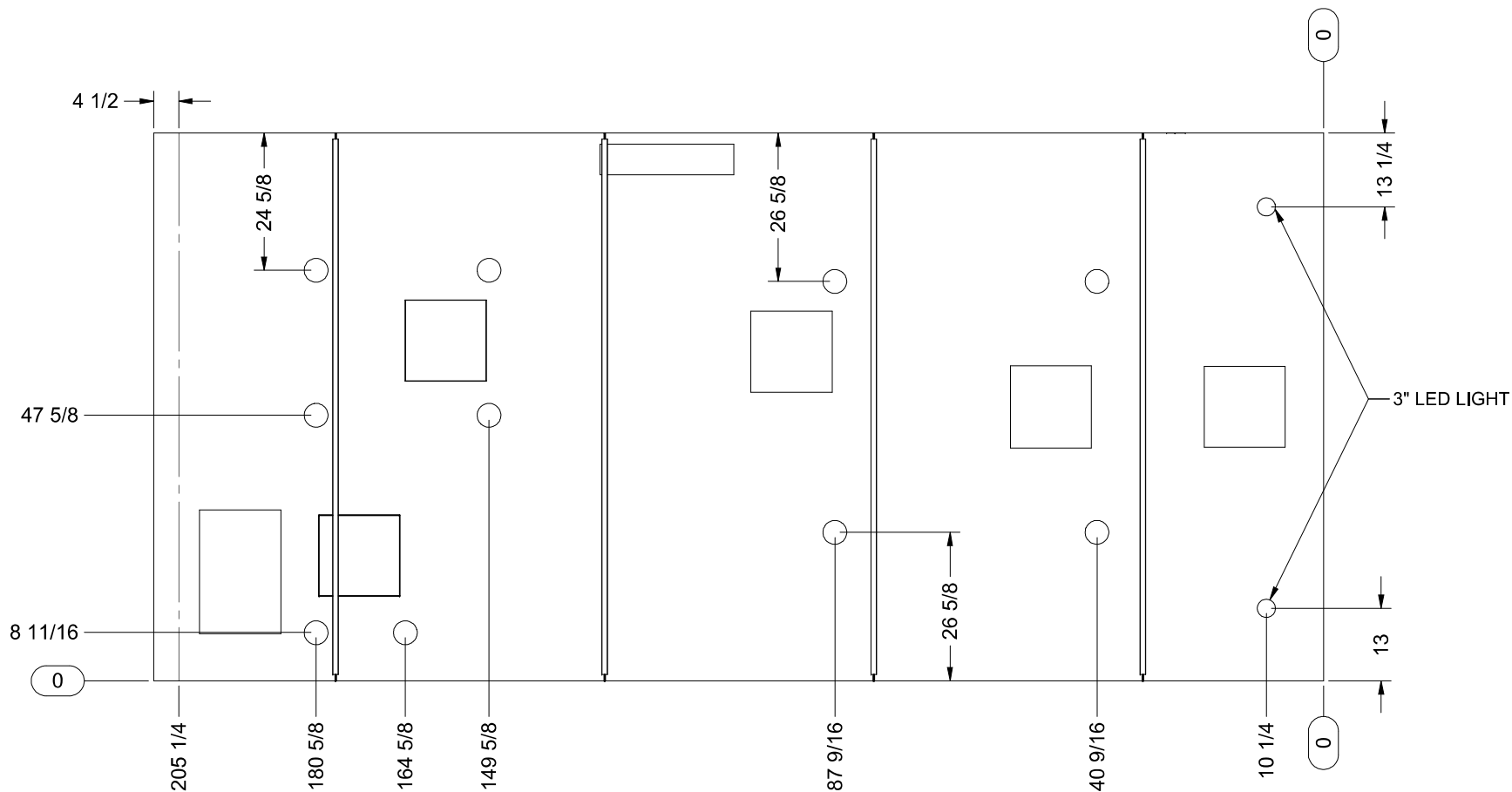
© CONFIDENTIAL AND PROPRIETARY
INFORMATION OF THOR MOTOR COACH. ANY
REPRODUCTION IN PART OR AS A WHOLE
WITHOUT OUR EXPRESS WRITTEN CONSENT
IS PROHIBITED.

DRAWING NUMBER
TRF1008



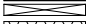
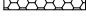

REVISION
1

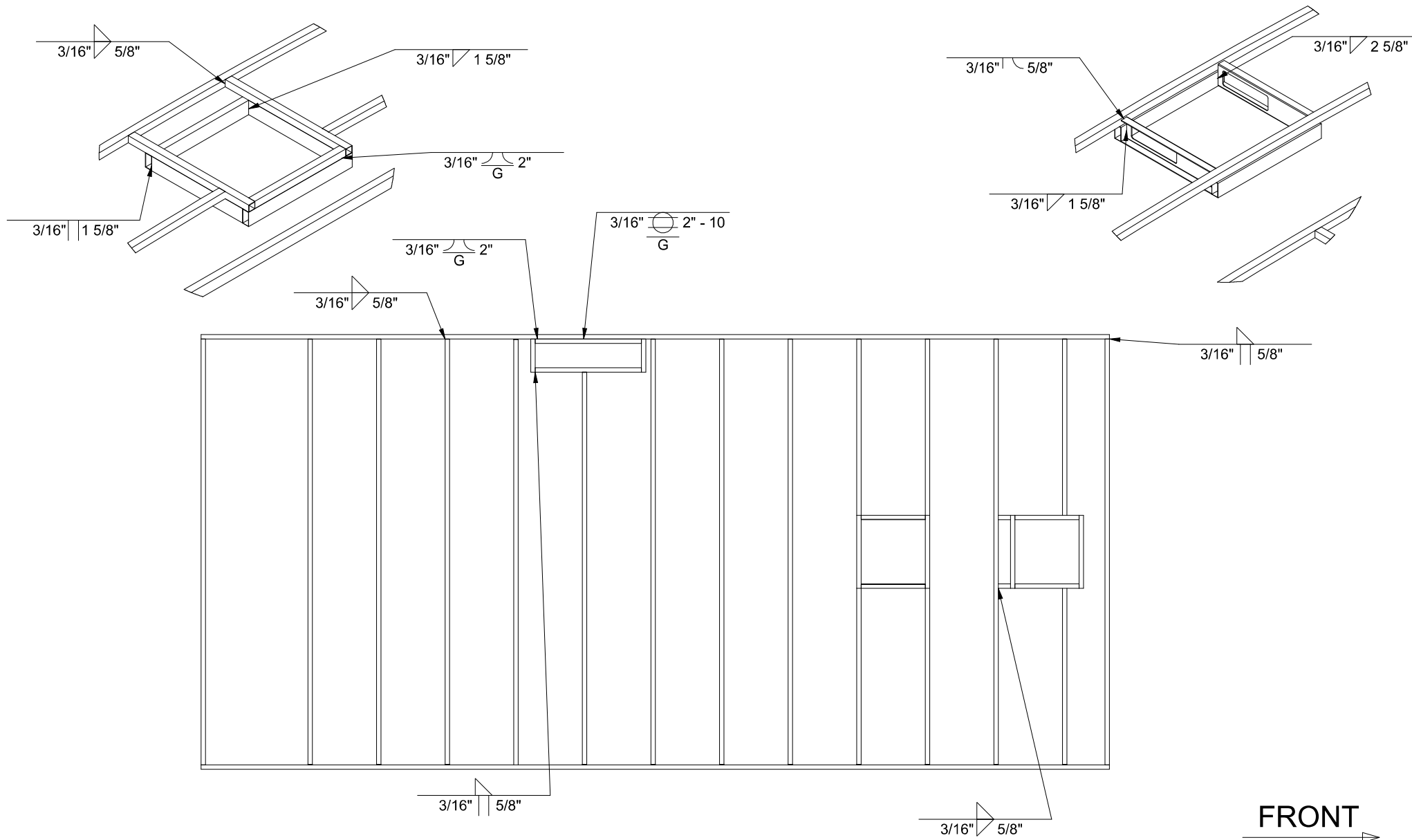
EXTERIOR EGS AND ASSEMBLY(Restructured)

| NO | QTY | DESCRIPTION - W x L (GRAIN) | SIZE A | SIZE B |
|----|-----|--------------------------------|--------|--------|
| 1 | 2 | BACKER, EGS, 36 X 36 (TLM0101) | | |
| 2 | 2 | BACKER, EGS, 30 X 26 (TLM0100) | | |
| 3 | 10 | FOAM, RADIUS ROOF (TLM0082) | | |
| 4 | 4 | LAUAN 48 x 99 x 2.7mm | 48 | 98 1/4 |
| 5 | 1 | LAUAN 48 x 99 x 2.7mm | 13 1/4 | 98 1/4 |



 **3" LED LIGHT**
 Ø 2 1/4
 **4" LED LIGHT**
 Ø 3 1/2
 **A/C VENT**
 Ø 5

| | | | | | |
|--|--|---|------------------|---------------------------|--------------------|
| ALL DIMENSIONS ARE TO LEADING EDGE OF PART, EXCEPT THE LAST DIMENSION ON THE PART | | | THOR MOTOR COACH | | |
| EGS SHOWN AS: PLYWOOD SHOWN AS: VOID SHOWN AS: ROUTE SHOWN AS: STRUCTURAL TUBE: TOLERANCE: ±1/16" | |      | | DRAWN BY CR | SHEET 5 OF 7 |
| SPECIAL NOTES: DRAWN PANEL SIDE UP | | DESCRIPTION ROOF, RADIUS, UNIT | | DATE 5/7/2018 | |
| | | MODEL 22E, 22HE, 22GO, SE22 | | | |
| | | © CONFIDENTIAL AND PROPRIETARY INFORMATION OF THOR MOTOR COACH. ANY REPRODUCTION IN PART OR AS A WHOLE WITHOUT OUR EXPRESS WRITTEN CONSENT IS PROHIBITED. | | DRAWING NUMBER TRF1008 | REVISION 1 |



FRONT

NOTES:

- VERTICAL WELDS TO BE WITHIN 3/16" FROM TOP AND BOTTOM OF TUBE.
- WELD LENGTH TOLERANCE +0 / -1/8"
- MAXIMUM WELD GAP BETWEEN TUBES IS 1/8"
- ALL TUBES MUST BE SECURELY WELDED IN PLACE
- ALL TUBES WITHOUT A WELD SYMBOL ARE TO BE WELDED TYPICAL TO A MARKED TUBE
- ANY OPENING LESS THAN 1-1/2" WIDE, WELD TOP SIDE OF TUBE THEN GRIND,
- NO WELD REQUIRED ON VERTICAL SIDE
- REPLACE FLARE / BEVEL WELDS WITH SQUARE WELDS ON TUBES WITH SQUARE CORNERS.

ALL DIMENSIONS ARE TO LEADING EDGE OF PART,
EXCEPT THE LAST DIMENSION ON THE PART

EGS SHOWN AS:
PLYWOOD SHOWN AS:
VOID SHOWN AS:
ROUTE SHOWN AS:
STRUCTURAL TUBE:
TOLERANCE: $\pm 1/16"$



SPECIAL NOTES:

DRAWN PANEL SIDE UP

THOR MOTOR COACH

DRAWN BY CR SHEET 6 OF 7 DATE 5/7/2018

DESCRIPTION

ROOF, RADIUS, UNIT

MODEL

22E, 22HE, 22GO, SE22

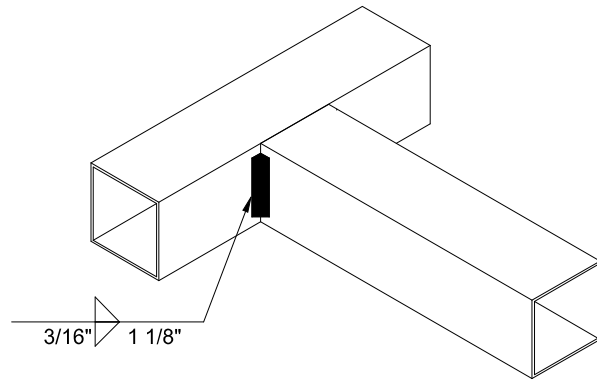
© CONFIDENTIAL AND PROPRIETARY
REPRODUCTION IN PART OR AS A WHOLE
WITHOUT OUR EXPRESS WRITTEN CONSENT
IS PROHIBITED.

DRAWING NUMBER
TRF1008

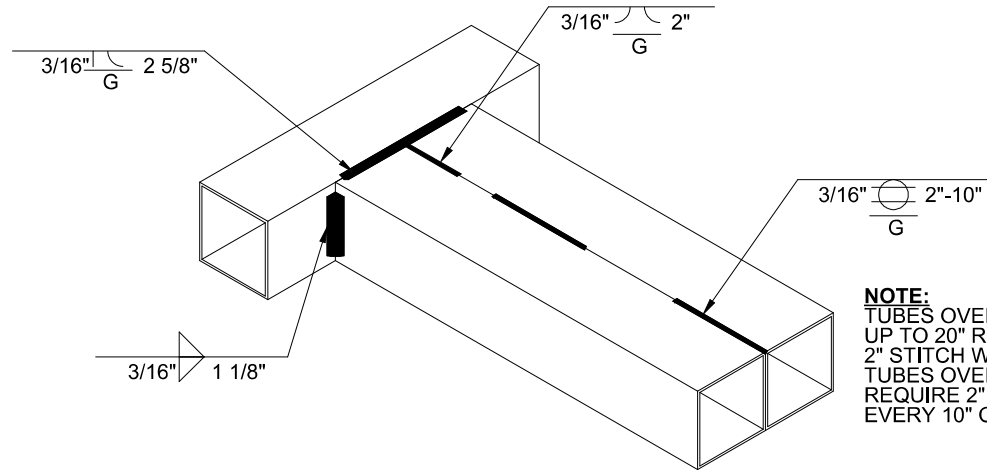
REVISION
1

COMMON WELDING NOTE:

** REPLACE FLARE / BEVEL WELDS WITH SQUARE WELDS ON TUBES WITH SQUARE CORNERS.

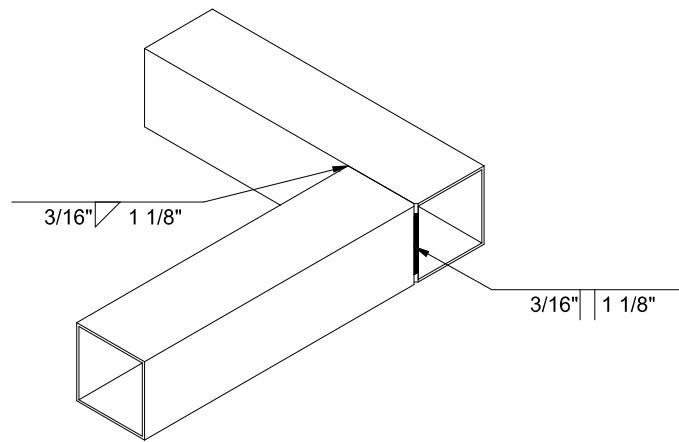


T JOINT

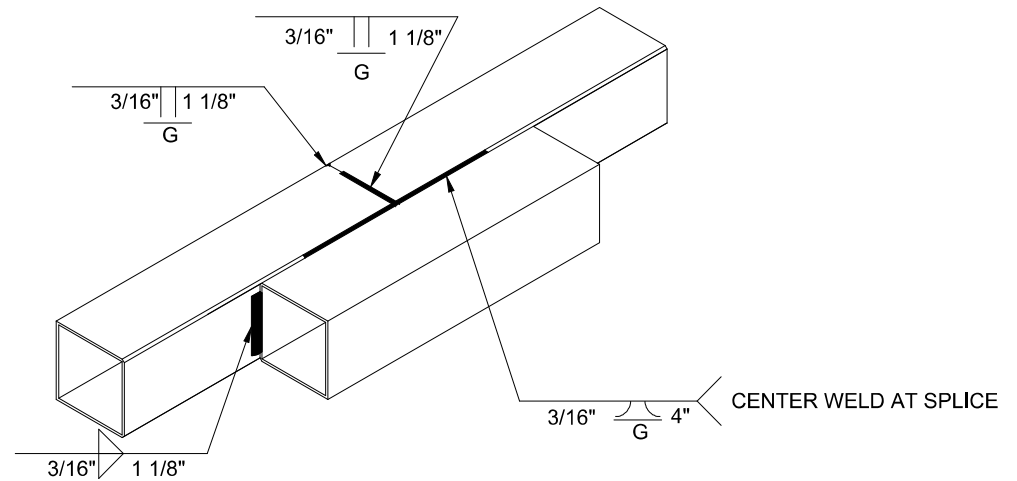


NOTE:
TUBES OVER 10" AND
UP TO 20" REQUIRE (2)
2" STITCH WELDS.
TUBES OVER 20"
REQUIRE 2" WELD
EVERY 10" ON CENTER.

T JOINT WITH EDGE TO EDGE JOINT



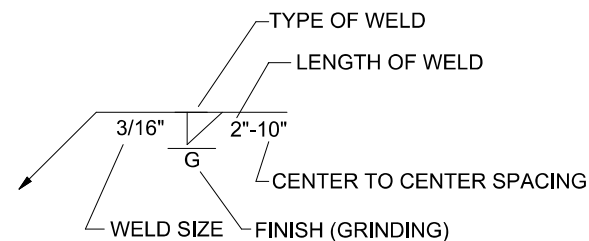
CORNER JOINT



END TO END SEAM JOINT

BASIC WELDING SYMBOLS AND THEIR LOCATION SIGNIFICANCE

| LOCATION SIGNIFICANCE | FILLET | SEAM (STITCH) | SQUARE | FLARE-V | FLARE-BEVEL | SPOT |
|-----------------------|--------|---------------|--------|---------|-------------|----------|
| ARROW SIDE | | | | | | |
| OTHER SIDE | | | | | | |
| BOTH SIDES | | NOT USED | | | | NOT USED |



| | | | |
|--|-------------------|----------------------|-------------------------|
| THOR MOTOR COACH | | | |
| DRAWN BY CR | SHEET 7 | OF 7 | DATE 5/7/2018 |
| DESCRIPTION ROOF, RADIUS, UNIT | | | |
| MODEL 22E, 22HE, 22GO, SE22 | | | |
| DRAWING NUMBER TRF1008 | | REVISION 1 | |