



Thor Motor Coach Technical Service Bulletin

TSB #	TSB 22-11		
Description/Title:	2022-2023 Sequence & Tellaro with Relion batteries		
Affected Product Line(s):	Certain model year 2022-2023 Sequence & Tellaro		
Service Campaign # :	RC000278	Released Date:	
Codes:	Inspect Only: 0.2 TMCTS80276Y	Document Date:	8/22/2022
Time Allowed:	Inspect with Repair: 0.3 TMCTS80276W	Document Revision:	

Issue:

Timer module used with Relion batteries is not functioning properly which could overload the batteries and cause them to temporarily shut down. If the unit is not equipped with Relion batteries, no repair is needed.

Tools Required:

Screw gun

Part(s) Required:

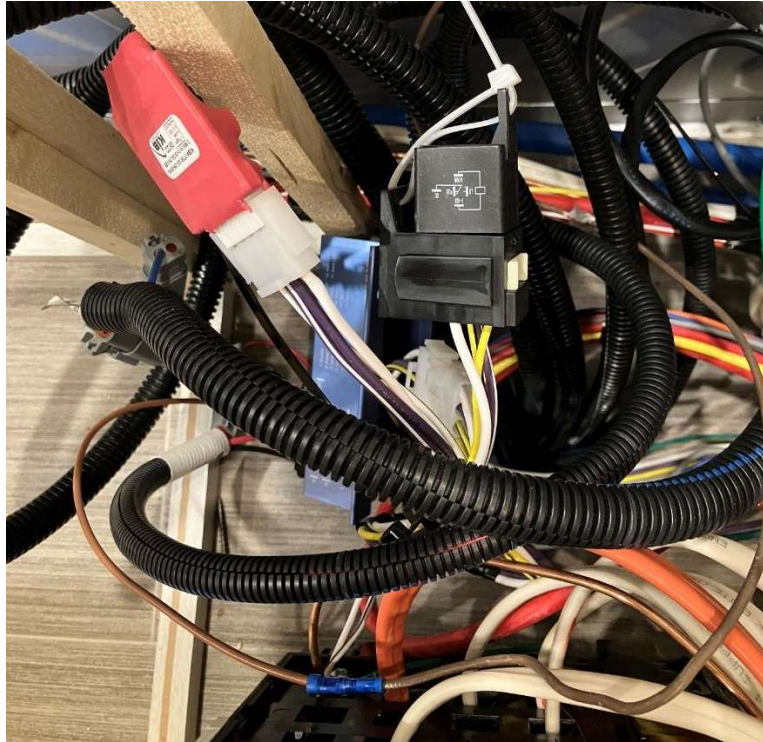
0505721 – DIGITAL TIMER MODULE, 2 MINUTE, WITH RE-TRIGGER FEATURE

Instructions:

See attached repair instructions below.

Inspection/Replace timer module

1. Locate the Relion pigtail behind the load center.



The module does not need to be replaced if the sticker shows v03 as below in the picture.



2. The date code on timer sticker can also be used to indicate if the module needs to be replaced.
 - a. Replace timer if dated prior to 8/22

Below images show dates on a bad module (left) & a good module (right)

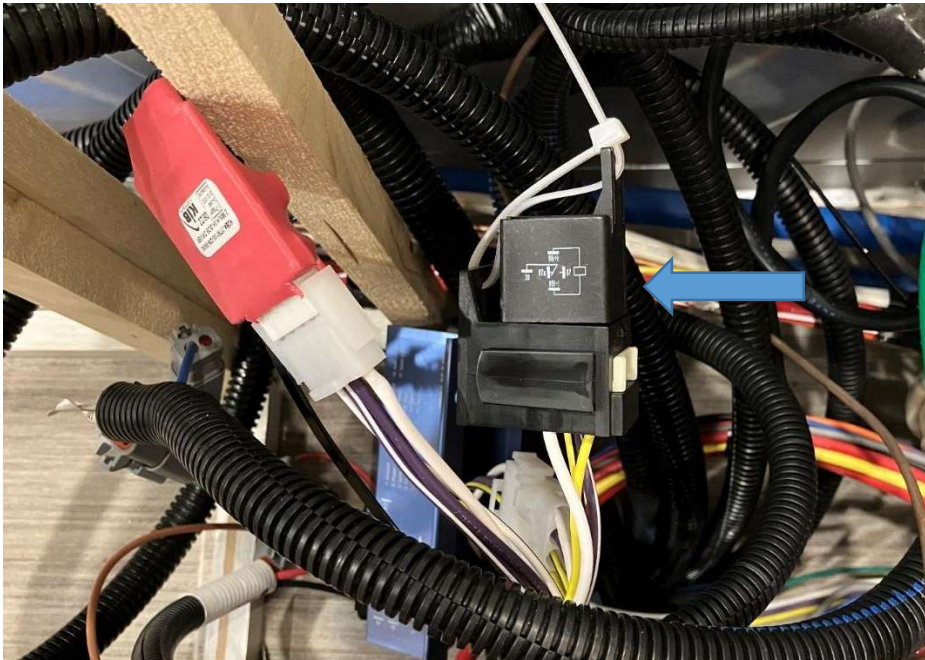


3. Replace the timer if needed, timer connector is directional and will only connect one way.



Verifying function of timer module

1. Behind the load center, locate the relay on the Relion pigtail.



2. While holding the relay, apply a load to the microwave circuit.
 - a. Ex: Turn on microwave, use load tester or large fan.
 - b. This will trigger the relay causing the A/C compressor to be disconnected by the relay.
 1. You will be able to feel the relay click.
3. Remove the applied load from the circuit.
 - a. The timer should keep the relay engaged for 2 minutes after the load is removed from the circuit.
4. Set a timer on your phone or another device for 1 min 45 seconds.
5. After timer goes off, hold the relay again for approx. 15 seconds.
 - a. At the 2-minute mark the relay should click again, reengaging the A/C compressor.