



LINC<sup>®</sup> REMOTE SYSTEM  
**OWNER'S MANUAL**

L I P P E R T  
C O M P O N E N T S<sup>™</sup>

# TABLE OF CONTENTS

<b>System Information</b>	<b>2</b>
<b>Remote Security</b>	<b>3</b>
Reset PIN Code	3
<b>Operation</b>	<b>4</b>
Menu Screen Options	4
Selecting Components	4
<b>Calibration</b>	<b>5</b>
<b>Notes</b>	<b>6</b>

## System Information

Our Linc® remote systems come in five- and eight-function applications. The Linc® remote can control multiple slide-outs, stabilizer jacks, landing gear, awnings or lights. Linc® allows users to operate all the Linc® compatible functions outside the coach while monitoring their progress at the same time.

- Provides an easier, more convenient camping experience
- Five- or eight-function remote control capabilities
- Can control slide-outs, awnings, lighting, stabilizer jacks, power landing gear, TV lifts and much more
- Available with one-touch auto-leveling option
- Power adapter included

Keep the following information in mind when programming and operating the Linc® remote:

- A. Never attempt to operate a slide-out, awning, stabilizer jack, landing gear, etc. from the Linc® remote and corresponding redundant switch at the same time. Doing so can blow one or more fuses on the LCI multi-function receiver.
- B. Immediately after operation of motor-reversing components using the Linc® remote control, there is an 8 to 10 second time period during which all redundant switches for motor-reversing components are nonfunctional.
- C. The "Light" button on the Linc® remote always controls the "Exterior Light" or "Exterior Light 1" circuit. This is the circuit that operates the awning light (main awning light on models with more than one awning), step light, etc. This circuit does not have "soft start" functionality.
- D. If the awning light (main awning light on models with more than one awning), step light, etc. are turned "on" with the Linc® remote they **MUST** be turned "off" with the Linc® remote. The redundant on/off switch will not turn "off" main awning lights turned "on" with the Linc® remote.
- E. If the awning light (main awning light on models with more than one awning), step light, etc. are turned "on" with the redundant on/off switch they **MUST** be turned "off" with the redundant on/off switch. The Linc® remote will not turn "off" main awning lights turned "on" with the redundant on/off switch.
- F. On models with two power awnings, the lights on the second awning are secondarily controlled by a lighting conversion relay and are programmed to operate as "Exterior Lights 2". This circuit has "soft start" functionality. The second awning (secondarily controlled by a lighting conversion relay) can be operated by the Linc® remote or the redundant on/off switch in any order at any time.
- G. The Linc® remote will enter "Sleep Mode" after 60 seconds of inactivity.

## Remote Security

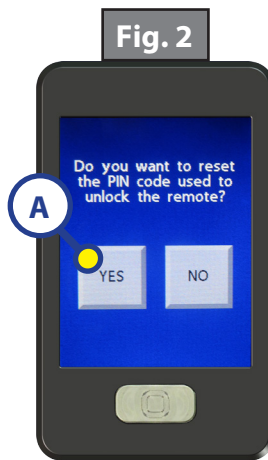
The PIN code was added to the Linc® remote to provide personalized security for the remote, as well as serve as a safety feature to prevent inadvertent activation of functions. To utilize this set of instructions, the unit **MUST** be equipped with a multi-function receiver and the Linc® remote. These instructions do not apply to any other remote.

### Reset PIN Code

1. Press "Home" button to turn on the remote (Fig. 1).
2. Press and release "Home" button five times.
3. Press "CONFIG" (Fig. 1A).
4. The remote will ask to reset the screen lock PIN code (Fig. 2).
5. Press "Yes" (Fig. 2A).
6. The remote will display a message that the PIN has been reset (Fig. 3).
7. Press "Home" button and press "Set PIN" (Fig. 4A).
8. Enter a 4-digit PIN code (Fig. 5).
9. Press "Save" (Fig. 6A).

**NOTE:** To start programming over, push and hold the "Home" button for 5 seconds to turn off the remote. Push the "Home" button again to turn the remote back on and restart the programming procedure.

10. Press "Home" button.
11. When the keypad appears on the screen, enter the 4-digit PIN by pressing the corresponding numbers entered in Step 7 (Fig. 7).



## Operation

### Menu Screen Options

1. The menu screen will show sets of four functions (Fig. 8). Select a function or press "Next" for more options (Fig. 8A).
2. To return to the previous menu screen press "Prev" (Fig. 9A).
3. Light functions can be turned on and off by pressing "Light" in the menu (Fig. 10A).

### Selecting Components

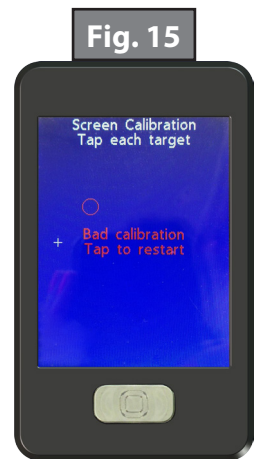
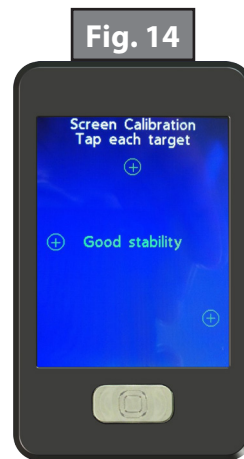
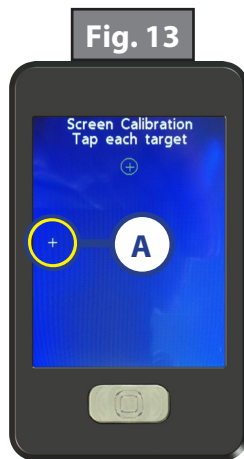
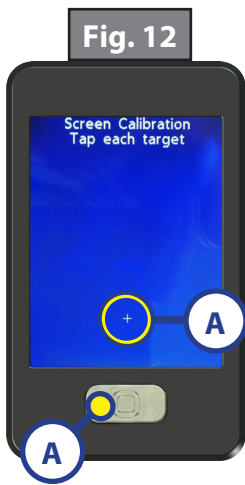
1. Press a component in the menu to enter the function's operation screen. This screen will display: on/off, or arrow up/down, or arrow in/out function options (Fig. 11). To return to the previous screen, press the "Home" button.



## Calibration

This procedure affects the location the device perceives was touched and where it actually clicks. Using a stylus will provide the device with a more accurate point and may ease operation. If the device is not accurately responding to the user then follow the procedure below.

1. Press the "Home" button (Fig. 12A) 10 times.
2. Press the 3 cross hair targets as accurately as possible (Fig. 12B).
3. Press 3 more confirmation cross hair targets as accurately as possible (Fig. 12A).
  - A. If all cross hairs are tapped accurately the screen will display "Good Stability" (Fig. 14). Press the "Home" button to return to the main screen and continue operations.
  - B. If the cross hairs are not tapped accurately the screen will display a message stating "Bad Calibration Tap to Restart" (Fig. 15). If this happens press anywhere on the screen to restart this procedure.



## Notes

This image shows a single sheet of white paper with horizontal ruling lines. The lines are evenly spaced and run across the width of the page. There are no margins, text, or other markings on the paper.

Lined area for notes or drawing.



# L I P P E R T C O M P O N E N T S<sup>TM</sup>

The contents of this manual are proprietary and copyright protected by Lippert Components, Inc. ("LCI"). LCI prohibits the copying or dissemination of portions of this manual unless prior written consent from an authorized LCI representative has been provided. Any unauthorized use shall void any applicable warranty. The information contained in this manual is subject to change without notice and at the sole discretion of LCI.

Revised editions are available for free download from

Please recycle all obsolete materials.

For all concerns or questions, please contact  
Lippert Components, Inc.

Ph: (574) 537-8900 | Web: